

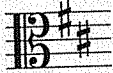
Austrian composer **Wolfgang Amadeus Mozart** (1756–1791) was a child prodigy who first performed in concert at age 6. He lived during the time of the American Revolution (1775–1783). Mozart’s music is melodic and imaginative. He wrote hundreds of compositions, including a piano piece based on this familiar song.

43. A MOZART MELODY

Adapted by W. A. Mozart

Musical notation for 'A Mozart Melody' in bass clef, 3/4 time, D major. The piece consists of three staves of music. The first staff begins with a *pizz.* marking and a finger number '0'. The melody is simple and melodic, with fingerings indicated above the notes. The second and third staves continue the melody, with a bracket under the first two measures of the second staff. The piece ends with a double bar line.

Key Signature D MAJOR



A **key signature** tells us what notes to play with sharps and flats throughout the entire piece. Play all F’s as F# (F-sharp) and all C’s as C# (C-sharp) when you see this key signature, which is called “D Major.”

44. MATTHEW’S MARCH

Musical notation for 'Matthew's March' in bass clef, 4/4 time, D major. The piece consists of two staves of music. The first staff begins with a *pizz.* marking and fingerings '3', '2', '3', and '4'. The melody is more rhythmic and includes a triplet. The second staff continues the melody with fingerings '3', '4', '2', '1', '4', and '4'. Brackets are used under the first two measures of the second staff.

△ Play F#’s and C#’s when you see this key signature.

45. CHRISTOPHER’S TUNE

Musical notation for 'Christopher's Tune' in bass clef, 4/4 time, D major. The piece consists of two staves of music. The first staff begins with a *pizz.* marking and fingerings '0', '2', '1', '3', '1', and '3'. The melody is simple and melodic. The second staff continues the melody with a bracket under the first two measures.

46. ESSENTIAL CREATIVITY Play the notes below. Then compose your own music for the last two measures using the notes you have learned with this rhythm:

